

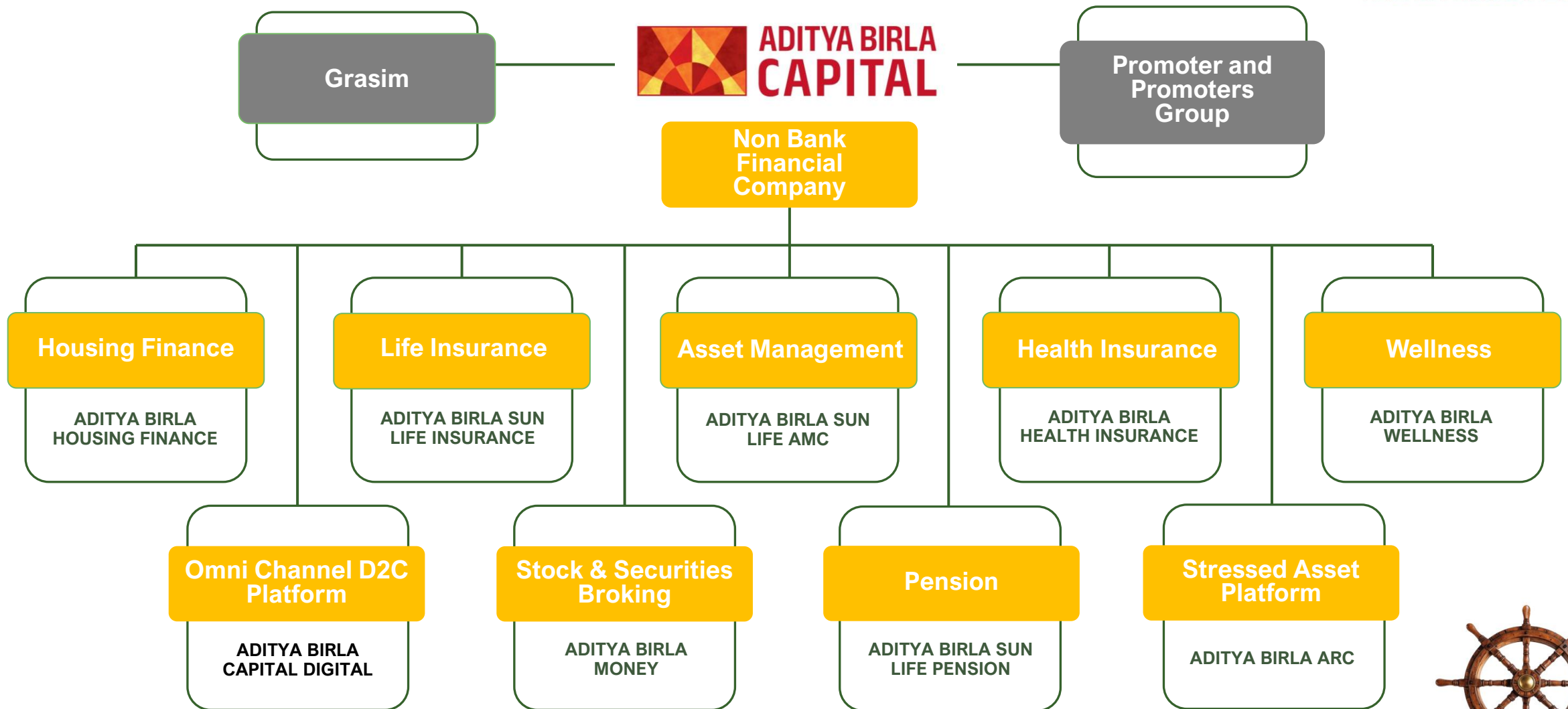


ABSL India Special Opportunities Portfolio

March 2026

Investments in securities are subject to market risks and there can be no assurance or guarantee that the objectives of the Product will be achieved.

Aditya Birla Capital Limited – A Financial Powerhouse



Source : Internal. Above is not intended to show the complete organizational structure and all entities therein. It is intended to describe the key businesses of Aditya Birla Capital.

ABSLAMC: A Joint Venture between Two Pioneering Groups



- ◆ Part of Aditya Birla Group (ABG) - one of the largest Indian conglomerates with interest across various commodity, manufacturing & service businesses and operations in over 40 countries
- ◆ Managing AUM of ₹ 6 Lac Cr (as on December 31, 2025)
- ◆ Leading financial services organization providing – Asset Management, Life Insurance, Wealth Management, Corporate Lending, Project & Structured Finance, General Insurance Broking, Broking & Private Equity, Housing Finance etc.



- ◆ A leading Canadian financial services company
- ◆ AUM CAD \$ 1,605 billion (as on December 31, 2025)
- ◆ Offering diversified range of risk and financial management products for individuals and corporate
- ◆ Large international footprint across continents – major presence in North America & Asia



Asset Management



Heritage

- ◆ Founded in 1994, one of the oldest in India
- ◆ Promoted by Aditya Birla Capital Group & Sun Life Financial
- ◆ Have seen the market evolve across different asset classes over the years
- ◆ Driven by client centric product Innovation
- ◆ International presence in Dubai, Singapore and Mauritius.



Market Dominance

- ◆ One of the top AMCs in India with MF AUM of over 4,32,834 Cr (January 2026)
- ◆ Over 10.8 million investor accounts (January 2026)
- ◆ Strengths across different asset classes

Alternate Business

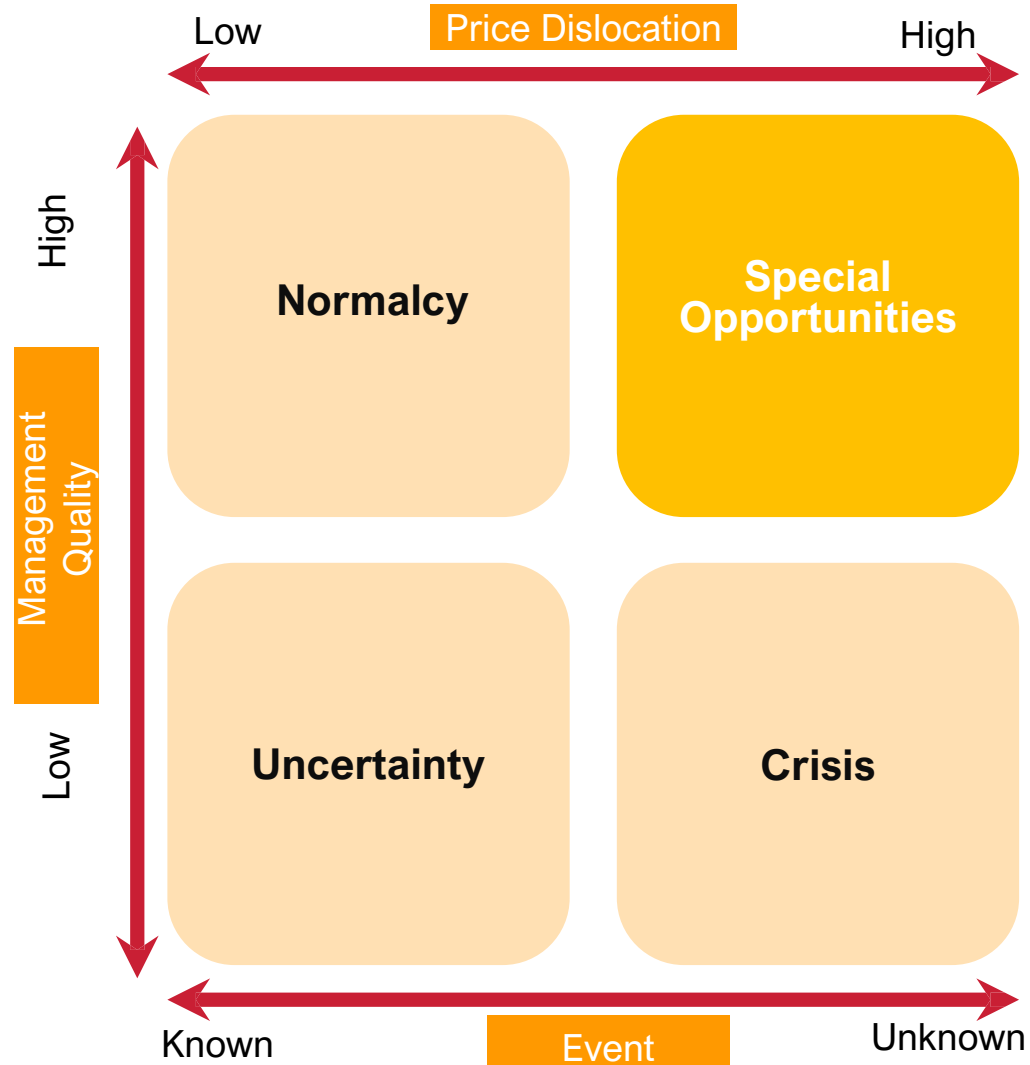


Best in Class Management

- ◆ Offer portfolio management services, alternate & offshore investment solutions to HNIs and Institutions
- ◆ Managing/advising Rs. 39,765 Cr of assets as of February 2026
- ◆ 21-member dedicated investment team for Equity, Fixed Income, Real Estate, and GIFT with a cumulative experience of 250+ years
- ◆ Focus on delivering sustained investment performance and portfolio differentiation.
- ◆ Strong and robust risk management and governance framework



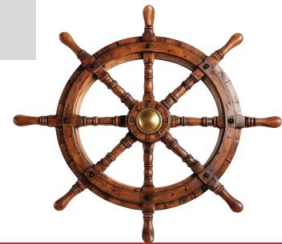
Spotting the Special Opportunities



Special Opportunities refers to unique challenges that a business, sector or an economy may face.

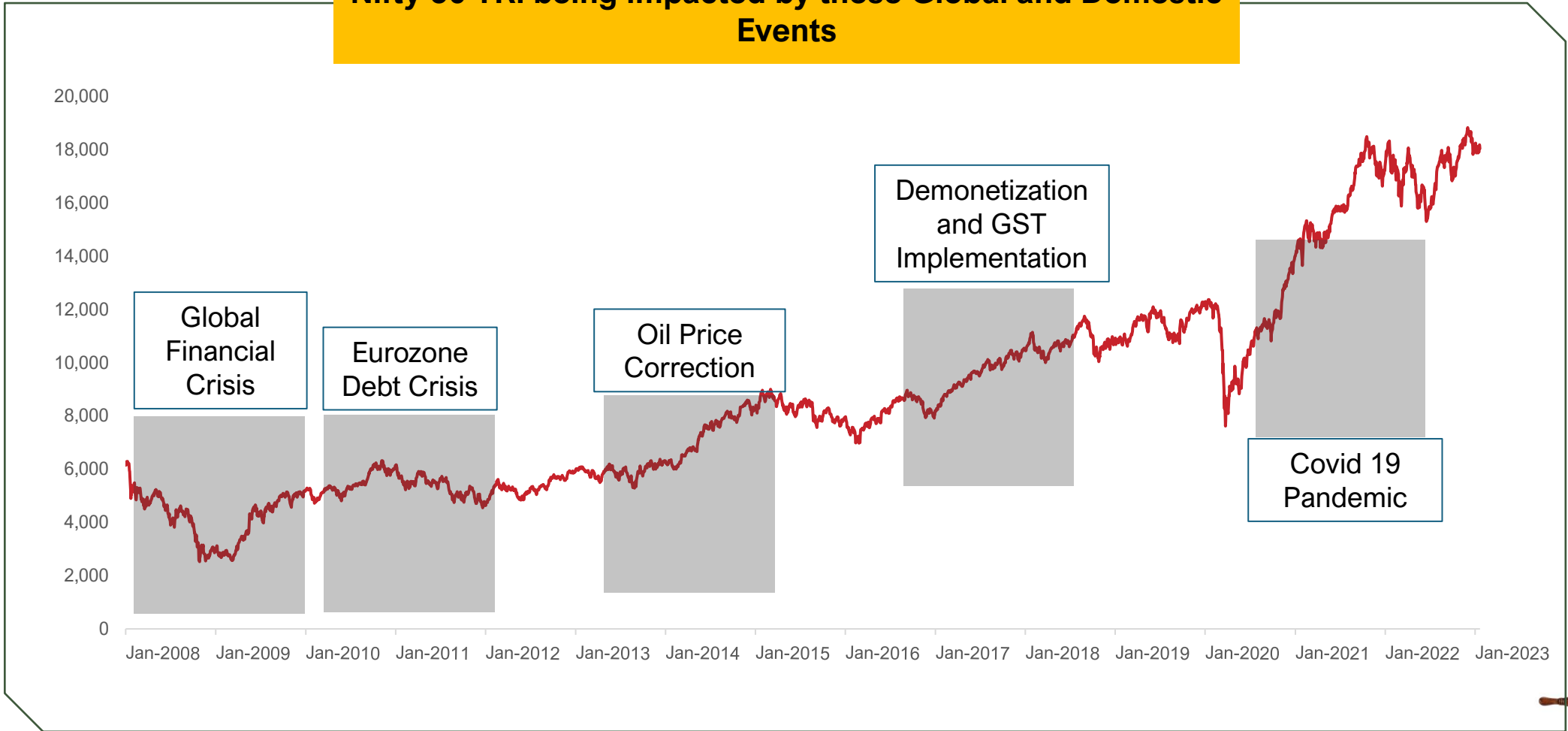


Special Opportunities leads to temporary dislocation in price, creating wonderful investing opportunity.



A single glance at the Nifty 50 index over the past 15 years

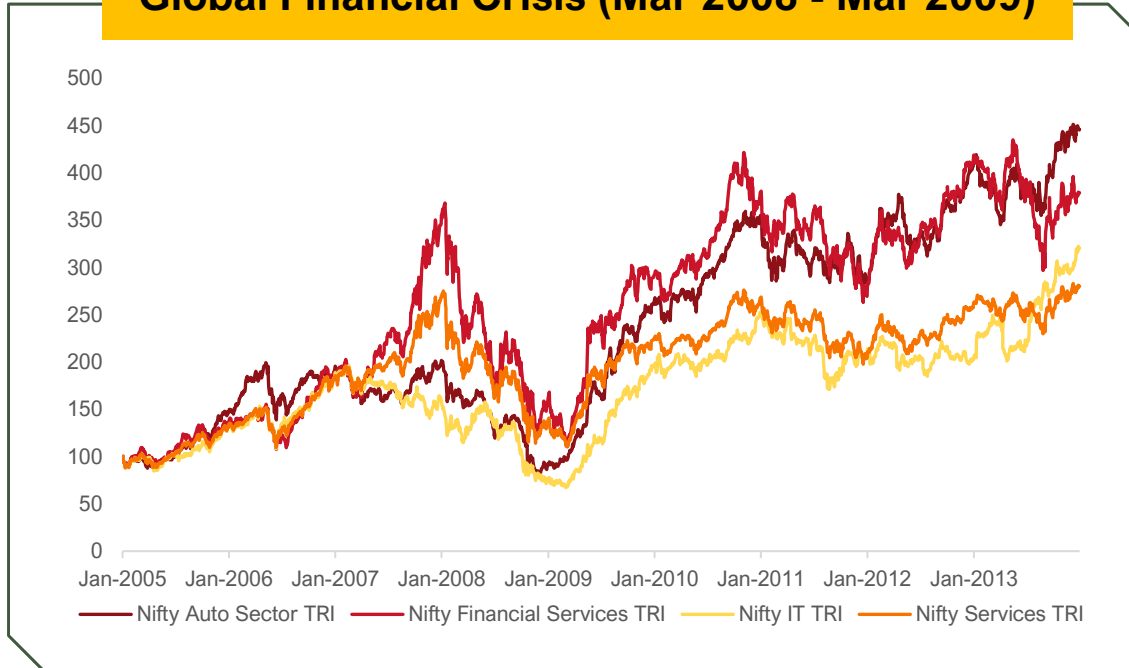
Nifty 50 TRI being impacted by these Global and Domestic Events



Data Source for all the graphs – Bloomberg

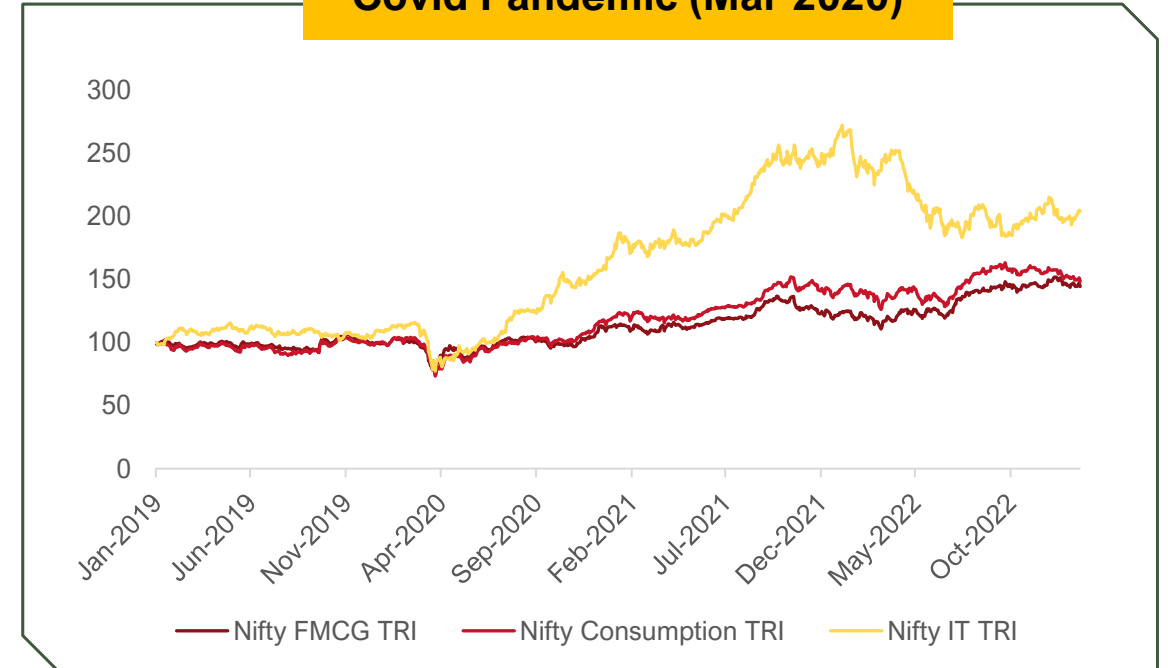
An overview of how an event impacted different sectors

Global Financial Crisis (Mar 2008 - Mar 2009)



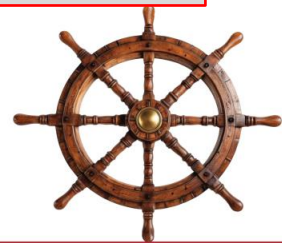
Global Financial Crisis of 2008-09 affected the all the sectors.

Covid Pandemic (Mar 2020)

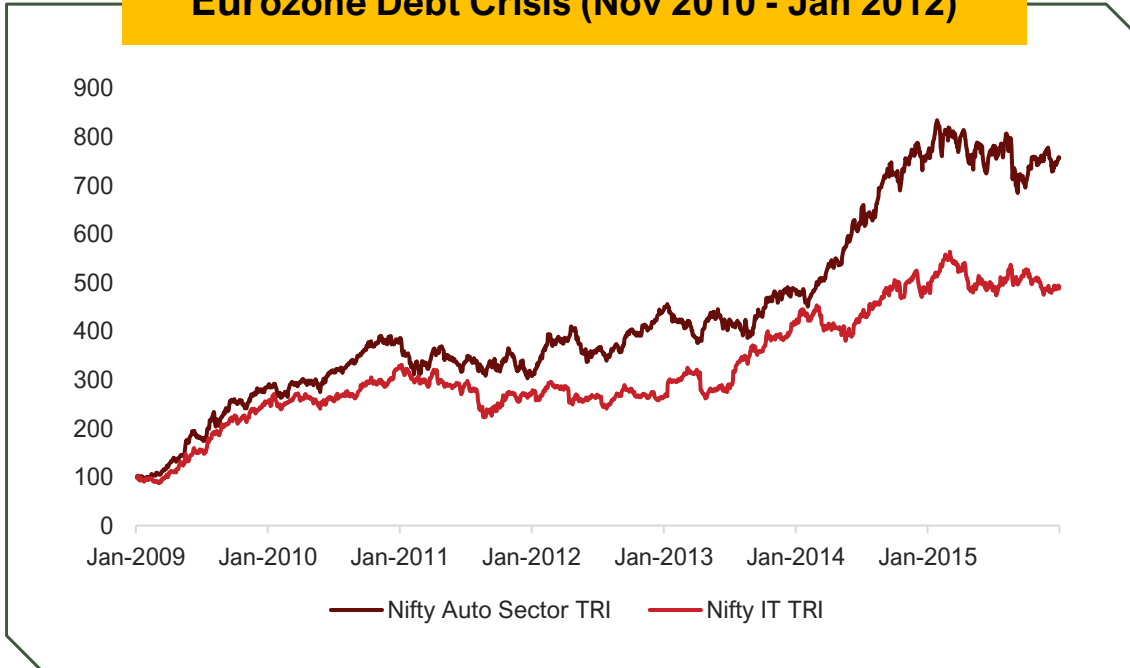


Covid Pandemic of 2020 affected all the sectors, post that the markets were able to recover.

Even if some events impact majority of the sectors, the magnitude of impact is different on each sector.

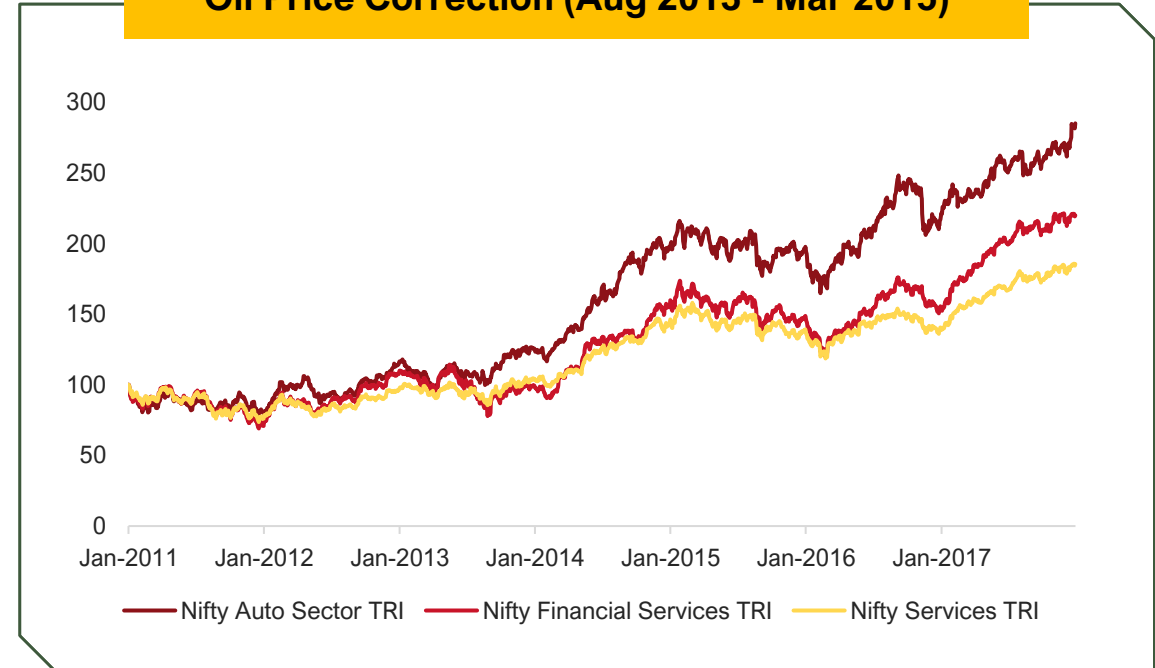


Eurozone Debt Crisis (Nov 2010 - Jan 2012)



A dip was observed on our sectors during the crisis but post that they recovered well

Oil Price Correction (Aug 2013 - Mar 2015)



The reduction in Oil Prices had a positive impact on the sectors

As seen, different sectors had different reactions to, during and after the events; an investor could see each of these as a good or a bad opportunity to invest or stay exposed to an investment in these sectors.



What are Special Opportunities?



Company Specific Factors

Events that typically arise out of firm specific restructuring or investor sentiment



Industry Specific Factors

Events that arise from business cycles and macro economic factors



Regulatory Factors

Events arising from changes in fiscal and monetary policies



Geopolitical Factors

Government intervention causing economic distress



Behavioural/Technological Factors

Changes in consumer psychology and preferences

Each stock and sector reacts differently to these special situations, depending on the type of situation, sector and stock



Company Specific Factors

Adverse Business Disruptions

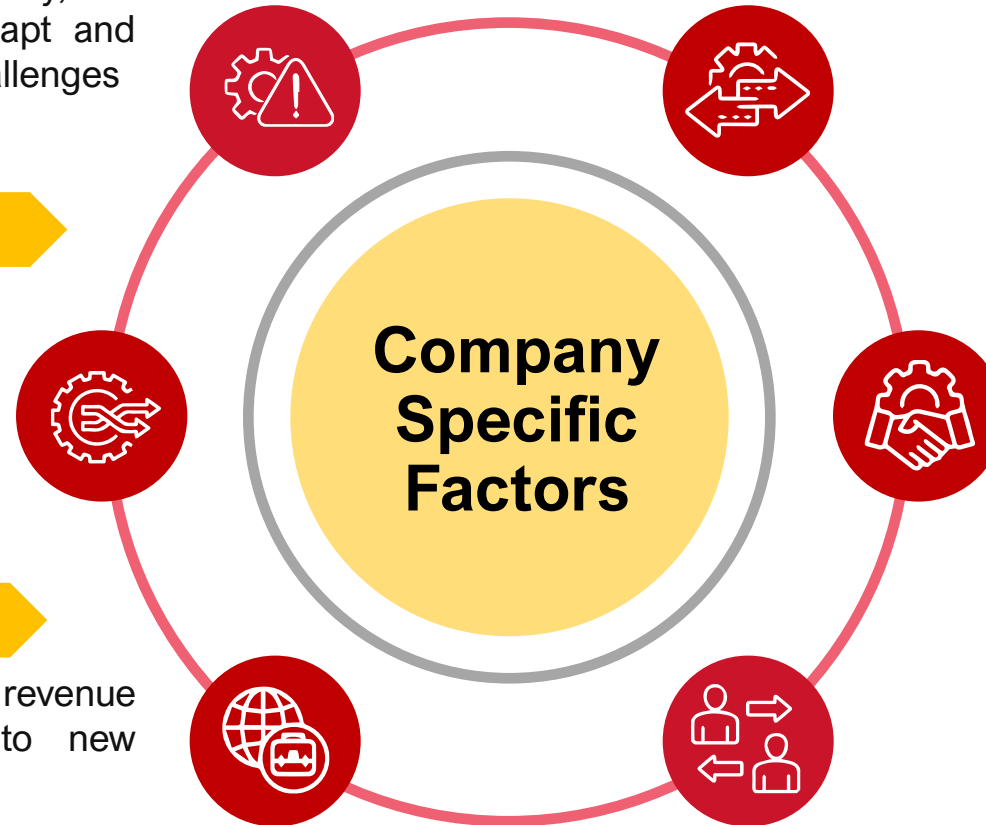
- Leads to innovation and creativity, as companies may be forced to adapt and find new solutions to overcome challenges
- Eg: Bharti Airtel Ltd

Change in Business Model

- Can help a company adapt to shifting market/regulatory conditions or take advantage of emerging trends
- Eg: Reliance Industries Ltd

New Product/Business line

- Potentially increase the company's revenue and profitability by tapping into new markets or customer segments
- Eg: TATA Motors Ltd



Financial Restructuring

- Reshuffling or reorganizing the capital structure of companies with an aim to achieve optimum balance between its debt & equity
- Eg: Radico Khaitan Ltd

M&A and JVs

- Combination of two or more entities aiming to achieve Synergies, Economies of Scale, Risk Diversification & Competitive Edge
- Eg: LTIMindtree Ltd

Management Change

- Management change can bring new ideas and fresh perspectives to the company, driving growth and success
- Eg: ICICI Bank Ltd



Industry Specific Factors



Change in Competition Intensity

- Competition increases if the market growth is slower
- Leads to innovation

Threat of New Entrant

- Risk a new competitor creates for current companies
- Decreases price for the consumers

Commodity prices & Inflation

- Commodity prices are leading indicators for inflation



Example – **Kotak Mahindra Bank Ltd**

The company has not only benefitted from rising interest rates (improving net interest margins) but also strong digital initiatives (that helped fend off fintech competition).





Government Reforms & Policies

- Amendments in policies by government influences economic conditions
- Stabilizes the business cycle
- Incentives to Industry



Change in Tariffs & Taxes

- Imposed by the government to protect domestic industry
- Typically incorporated to reduce imports



Regulatory Changes

- Changes in laws which affect a particular business or a sector or markets



Example – **Dixon Technologies (India) Ltd**

PLI Scheme will help Dixon leverage the government incentives to propel faster stock growth & improved forward guidance over medium to long term.





Political Events

Political changes such as elections, geopolitical conflicts, and economic treaties can adversely impact investment returns, posing risks to investors.

Geopolitical Factors



Catastrophic/ Pandemic Events

Events like war, Terrorism, Natural Disasters etc. can cause catastrophic damage to an economy by negatively impacting markets and investments

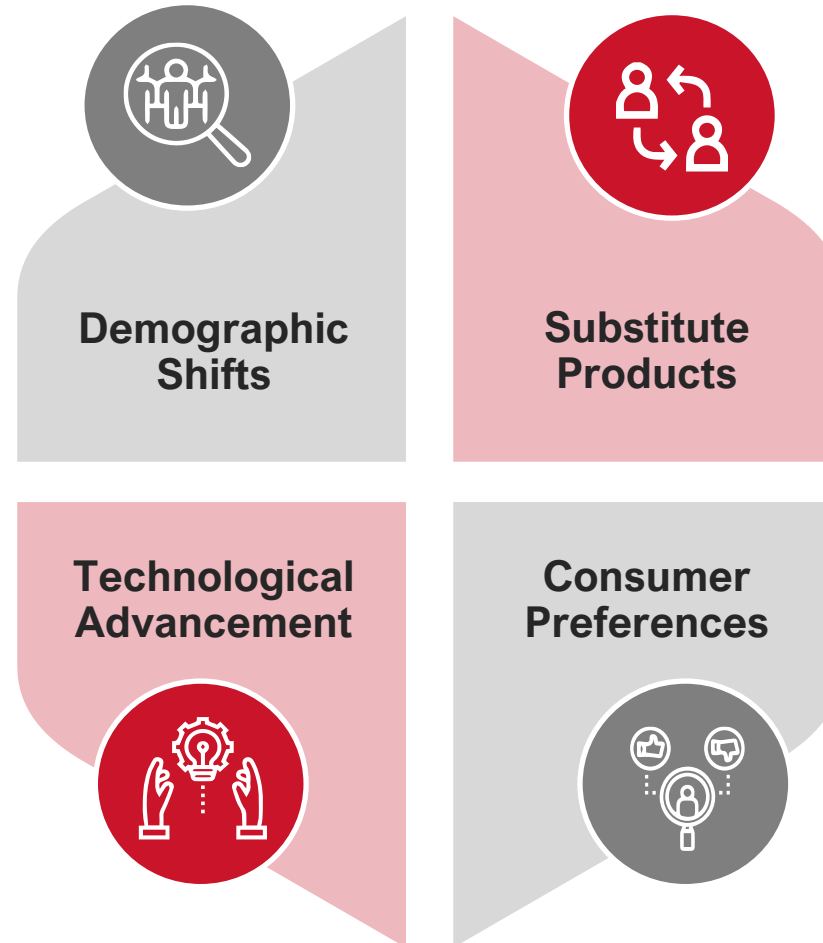


Example – **Bharat Dynamics Limited**

Defence sector companies like Bharat Dynamics benefit directly from geopolitical tensions and increased government defense spending amid border or regional conflicts.



Behavioural/Technological Factors



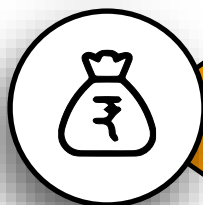
Example – ITC Ltd

Diversification into FMCG, packaged foods, and personal care caters to evolving consumer lifestyle and health consciousness. Shift away from tobacco products due to changing consumer behavior and regulations.



Introducing

**ABSL India Special
Opportunities Portfolio**



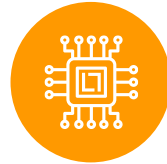
Fund Positioning

The Core focus would be on companies that are primed to benefit from the catalysts mentioned below:

Portfolio Construction		
Portfolio Weight	Investment Catalysts	Investment Rationale
70-100%	Company Specific Factors Industry Specific Factors Regulatory Factors Geopolitical Factors Behavioural/Technological Factors	Identify companies looking to benefit from catalysts mentioned, in next 2-4 years
0-30%	Upgrade in Market Cap Secular Growth Names	Performing Consistently



Strong Balance Sheet

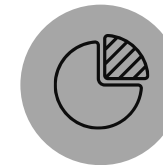


Management Quality



- ✓ Dislocation to Discovery
- ✓ Accelerated Secular Growth

Capital Allocation Track Record



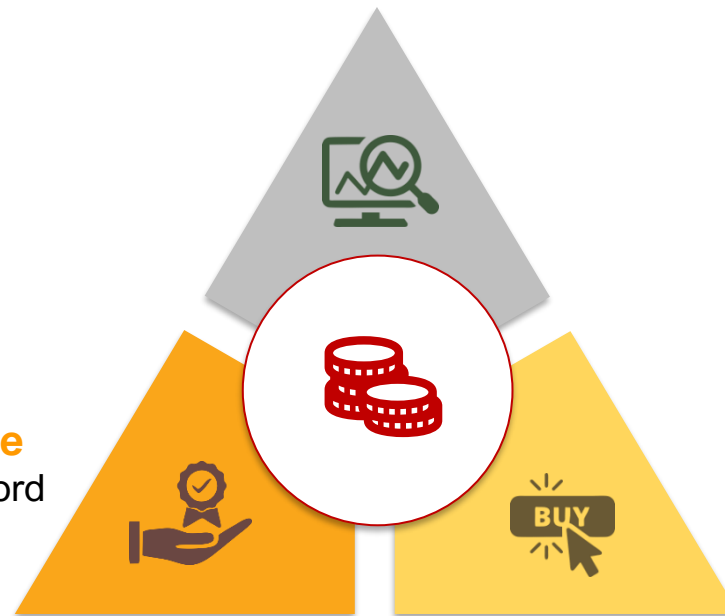
Special Opportunities ably supported by three levers



To identify & capitalize upon the prevailing market inefficiencies in a **Simple, Timely & Efficient** manner

Focus on Businesses
With ability & commitment to grow earnings faster than Nominal GDP

Purchase at Reasonable Price
Entry Level valuations which accord "Margin of safety"

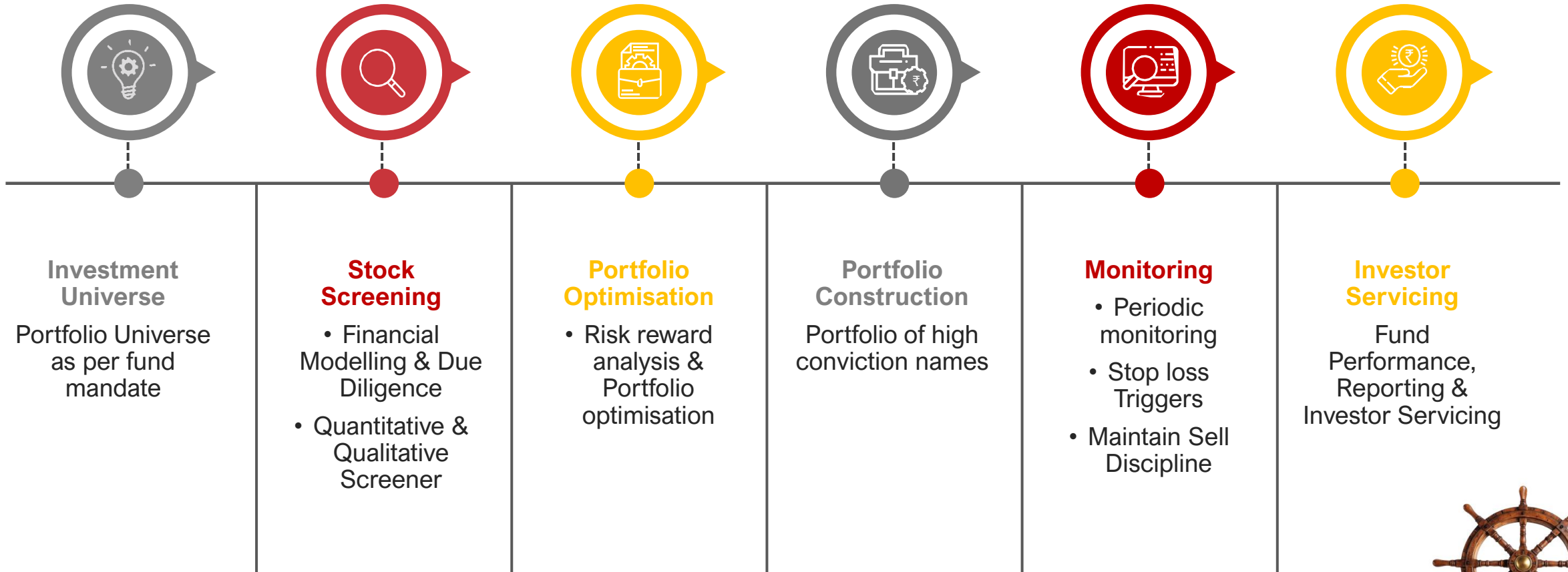


Buy Companies that have

- Large Opportunity Canvas (scope for non-linear growth outcomes)
- Credible Management
- Emphasis on Capital Efficiency
- Superior return ratios

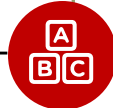


Investment Process



Screening

Fundamentals



Return on Equity >15%
Net Debt / EBITDA less than 2x
Improving margins & Turnover Ratios
Aggregate Portfolio liquidity

Valuation



Superior EPS Growth, RoCE & Net Debt to EBITDA
vs benchmark
Large Opportunity Canvas

Governance



Promoter's conduct & Management Integrity
High Pledge & Accounting Red Flags
Limited Equity Dilution in recent past

Financial Modelling & Due Diligence



Visible Earnings CAGR > 15% in medium term
Sustained Competitive Advantage led by Unique Value
Proposition
Interaction with investee companies & its ecosystem

Risk Management

Stop loss Triggers



If loss on stock is higher than benchmark on trailing
6 months by more than 30%

Periodic Monitoring



Quarterly Monitoring
Event Based Triggers

Maintain Sell Discipline



Poor Capital Allocation
Weakening Competitive Position
Any emerging governance issues



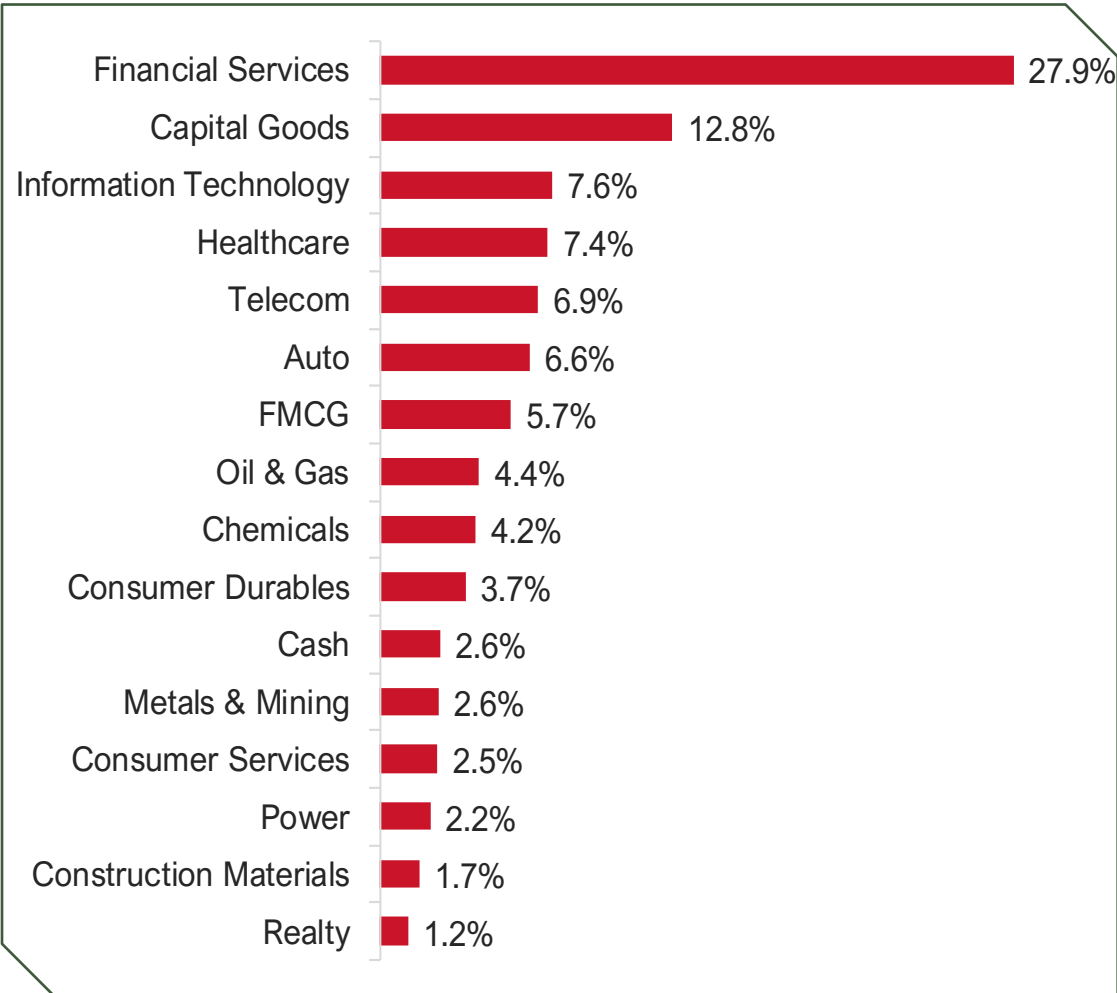
ABSL India Special Opportunities – Portfolio Construct

Portfolio Name	ABSL India Special Opportunities Portfolio
Structure	Discretionary PMS
Strategy	Equity
Nature	Open ended
Market cap	Multi cap
Investment Approach	The portfolio invests or proposes to invest in listed equity & equity related instruments with the aim of generating long term capital appreciation & income in the form of dividends. It can also invest in money market instruments & units of mutual fund. The portfolio aims to invest in stocks that are primed to benefit from the following catalysts – Micro turnaround, Macro turnaround, Management Change, Deleveraging, Demerger, Mid to Large cap potential and Secular growth companies. It is a Multicap portfolio. Stock selection is done through a combination of ‘Bottom up’ approach i.e. analyzing the fundamental attributes of the company & competition & ‘Top down’ approach i.e. analyzing the macro economic factors & industry growth characteristics.
Investment Manager	Aditya Birla Sun Life AMC Limited (ABSLAMC)
Benchmark	BSE 500 TRI
Portfolio Manager	Mr. Sameer Narayan & Mr. Salvin Shah
Time Horizon	Minimum 3 years
Minimum Investment	Rs 50 lakhs
Management & Performance fee	Please refer to Client Fee Schedule
Operating expenses	Please refer to Client Fee Schedule

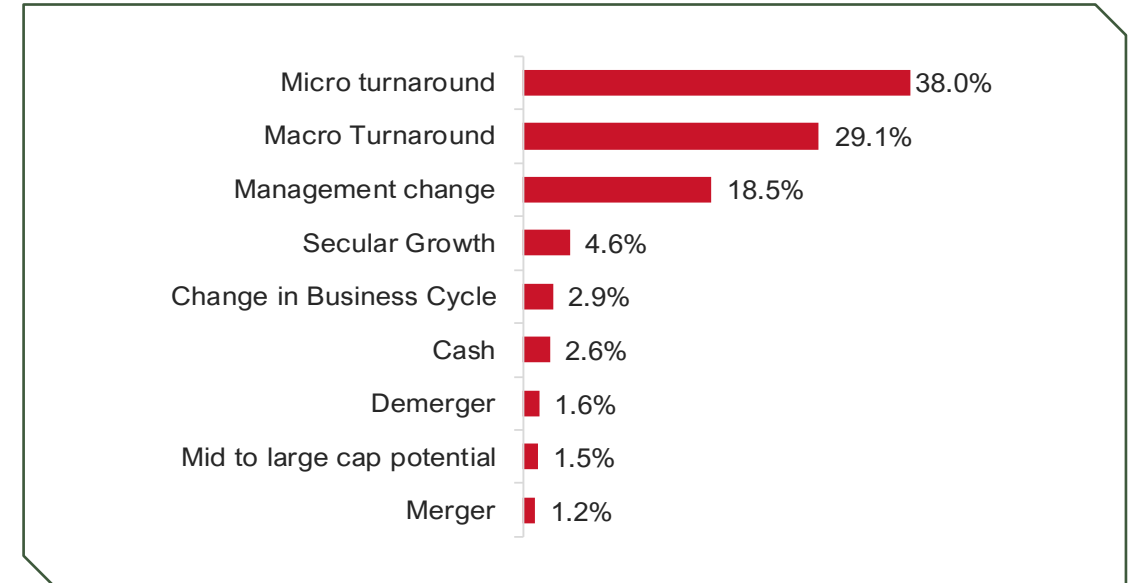


Current Portfolio Structure

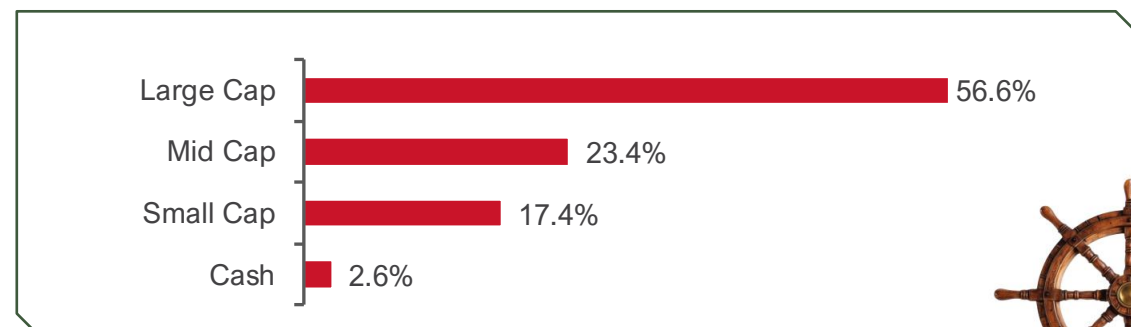
Sector Allocation



Catalysts



Market Cap



Market Cap Categorization as per Average Market Capitalization of listed companies during the six months ended Dec 31, 2025. Source : AMFI

Current Portfolio Structure

Portfolio vs. Benchmark (Higher Growth/ROEs with low leverage)

PE (x)	FY25A	FY26E	FY27E	Prem/Disc to Benchmark (FY26E)
ABSL India Special Opportunities Portfolio	38.7	35.7	28.7	56.3%
NIFTY 500	23.7	21.0	18.4	
BSE 500 TRI	23.3	21.0	18.3	

ROE (%)	FY25A	FY26E	FY27E	Prem/Disc to Benchmark (FY26E)
ABSL India Special Opportunities Portfolio	19.5%	17.8%	18.4%	23.2%
NIFTY 500	14.3%	14.7%	15.0%	
BSE 500 TRI	14.3%	14.6%	15.0%	

EPS Growth (%)	FY25A	FY26E	FY27E	Prem/Disc to Benchmark (FY26E)
ABSL India Special Opportunities Portfolio	80.8%	13.1%	23.8%	35.2%
NIFTY 500	10.5%	5.2%	17.6%	
BSE 500 TRI	12.1%	3.2%	17.6%	

Net Debt to Equity* (%)	FY 25	Prem/Disc to Benchmark
ABSL India Special Opportunities Portfolio	-1.9%	-107.2%
NIFTY 500	32.3%	
BSE 500 TRI	26.6%	

Top 10 Holdings & Weights

Top 10 Portfolio Holdings	% of Net Assets
ICICI Bank Ltd	5.5%
Bank Of Baroda	5.1%
Bharat Dynamics Limited	5.0%
Bharti Airtel Ltd	5.0%
Axis Bank Ltd	4.7%
Cholamandalam Investment and Finance Company Ltd	4.2%
Torrent Pharmaceuticals Ltd	3.7%
Sun Pharmaceuticals Industries Ltd	3.6%
AIA Engineering Ltd	3.5%
United Spirits Ltd	3.3%

*Financials excluded in calculation of D/E
Source: All ratios are based on Internal estimates



Portfolio Characteristics

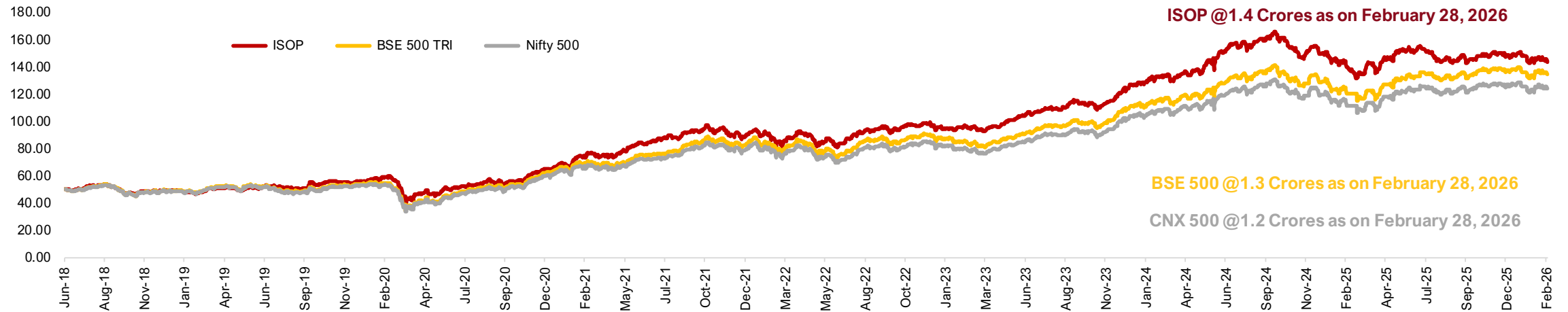
Key Ratios (3 Years)	ABSL India Special Opportunities Portfolio	BSE 500 TRI
Standard Deviation	13.72%	12.63%
Sharpe Ratio	0.73	0.99
Beta	1.04	
Portfolio Turnover	0.43	
Avg MCap (Rs. Cr.)	₹ 2,61,541	
Median MCap (Rs. Cr.)	₹ 1,20,023	

Above mentioned Portfolio Turnover is for 1 year



Performance

Returns	Absolute				CAGR			
	1 Month	3 Months	6 Months	1 Year	2 Years	3 Years	5 Years	Since Inception (14/06/2018)
ABSL India Special Opportunities Portfolio	-1.4%	-4.1%	0.6%	9.4%	4.4%	15.1%	14.4%	14.7%
BSE 500 TRI	0.5%	-3.1%	3.2%	17.3%	8.1%	17.7%	14.8%	13.7%
<i>Out/Underperformance</i>	<i>-1.9%</i>	<i>-1.0%</i>	<i>-2.6%</i>	<i>-7.9%</i>	<i>-3.7%</i>	<i>-2.5%</i>	<i>-0.4%</i>	<i>1.0%</i>
NIFTY 500	0.4%	-3.2%	3.1%	16.5%	7.4%	16.9%	13.7%	12.5%
<i>Out/Underperformance</i>	<i>-1.8%</i>	<i>-0.9%</i>	<i>-2.5%</i>	<i>-7.1%</i>	<i>-3.0%</i>	<i>-1.7%</i>	<i>0.7%</i>	<i>2.2%</i>



Disclaimer: Past performance of any product does not indicate its future performance.

- Performance data is based on Time-Weighted Rate of Return (TWRR) for aggregated performance statistics of all investors.
- Please note that performance of your portfolio may vary from that of other investors and that generated by the Investment Approach across all investors because of
 - the timing of inflows and outflows of funds; and
 - differences in the portfolio composition because of restrictions and other constraints
- Investment approach level performance reported is not verified by SEBI



As on February 28, 2026

CASE STUDIES

Sector- Financial Services

- ◆ ICICI Bank Ltd. is a prominent Indian multinational bank and financial services company, headquartered in Mumbai, with a registered office in Vadodara.
- ◆ It offers a wide range of banking and financial services to both corporate and retail customers through various channels and specialized subsidiaries. Originally established as a development finance institution, it has evolved into a leading private sector bank.


Key Facts

- ◆ The Bank has a network of 6,523 business centres, 17,000+ ATMs and Cash Recycling Machines, and 570 Insta Banking Kiosks across the country.
- ◆ ICICI Bank's mobile banking application, iMobile Pay, has more than 30 million users. The company recorded over 70% digital trade transactions and a 22% growth in volume of transactions on InstaBIZ
- ◆ iLens, ICICI Bank's lending solution, is an industry-first end-to-end digital lending platform covering the entire loan life cycle. It is a single interface that allows employees, third party agencies and sourcing channels to collaborate to facilitate faster turnaround of loan applications, greater transparency of loan status and an enriched customer experience.
- ◆ The Bank's international franchise focusses on four strategic pillars, namely the NRI ecosystem comprising deposits, remittances, investments and asset products; the MNC ecosystem comprising both foreign MNCs investing in India and Indian MNCs for their foreign currency and other India related requirements

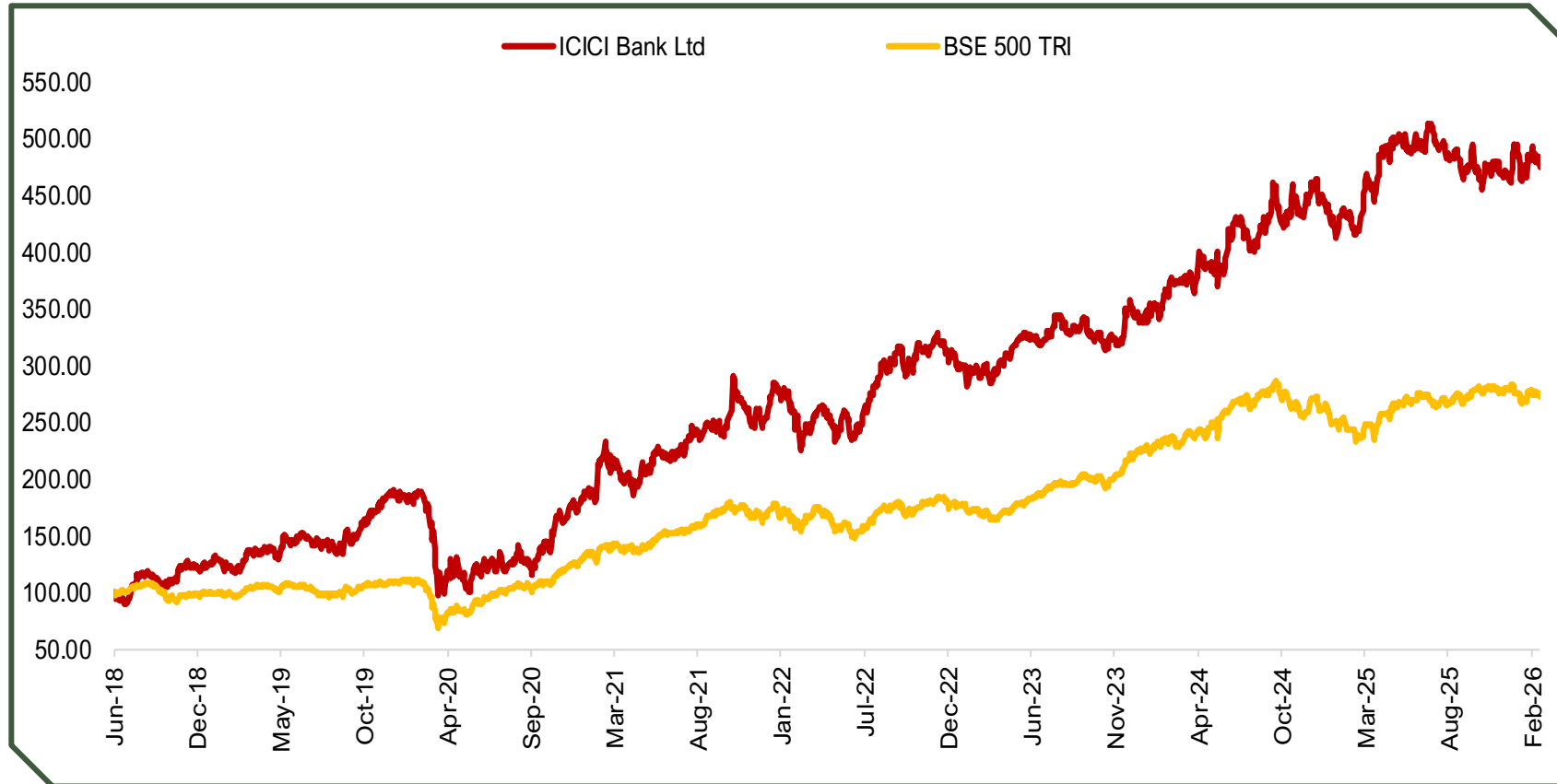


 **Date of Investment**
25 June 2018

 **Investment Price**
₹290

 **Current Price**
₹1,379

 **Total Returns**
4.76x (7.7 Years)



Note: Stock and Index rebased to the date of first purchase / As on February 28, 2026/ Source: Bloomberg



Sector- Capital Goods

- ◆ Headquartered in Hyderabad, **Bharat Dynamics Limited** (BDL), was incorporated as a Public Sector Undertaking under the Ministry of Defence, Government of India to be the manufacturing base for guided missile systems and allied equipment for the Indian Armed Forces..

Key Facts

- ◆ Since its inception, BDL has been working in collaboration with DRDO & foreign Original Equipment Manufacturers (OEMs) for manufacture and supply of various missiles and allied equipment to Indian Armed Forces.
- ◆ BDL has graduated from being a missile manufacturer to a Weapon System Integrator and has emerged as a complete solution provider for the Indian Armed Forces
- ◆ Today, BDL has evolved as one among the few industries in the world having state-of-the-art facilities for manufacture and supply of Guided Missiles, Underwater Weapons, Air- borne products and allied defence equipment for the Indian Armed Forces. The Company also offers Product Life Cycle Support and Refurbishment / Life Extension of vintage Missiles.
- ◆ DL is now set to produce the world class 'Beyond Visual Range' Astra Weapon System for the Indian Armed Forces. The weapon system has been developed by DRDO.



Bharat Dynamics Ltd



Date of Investment
18 October 2021



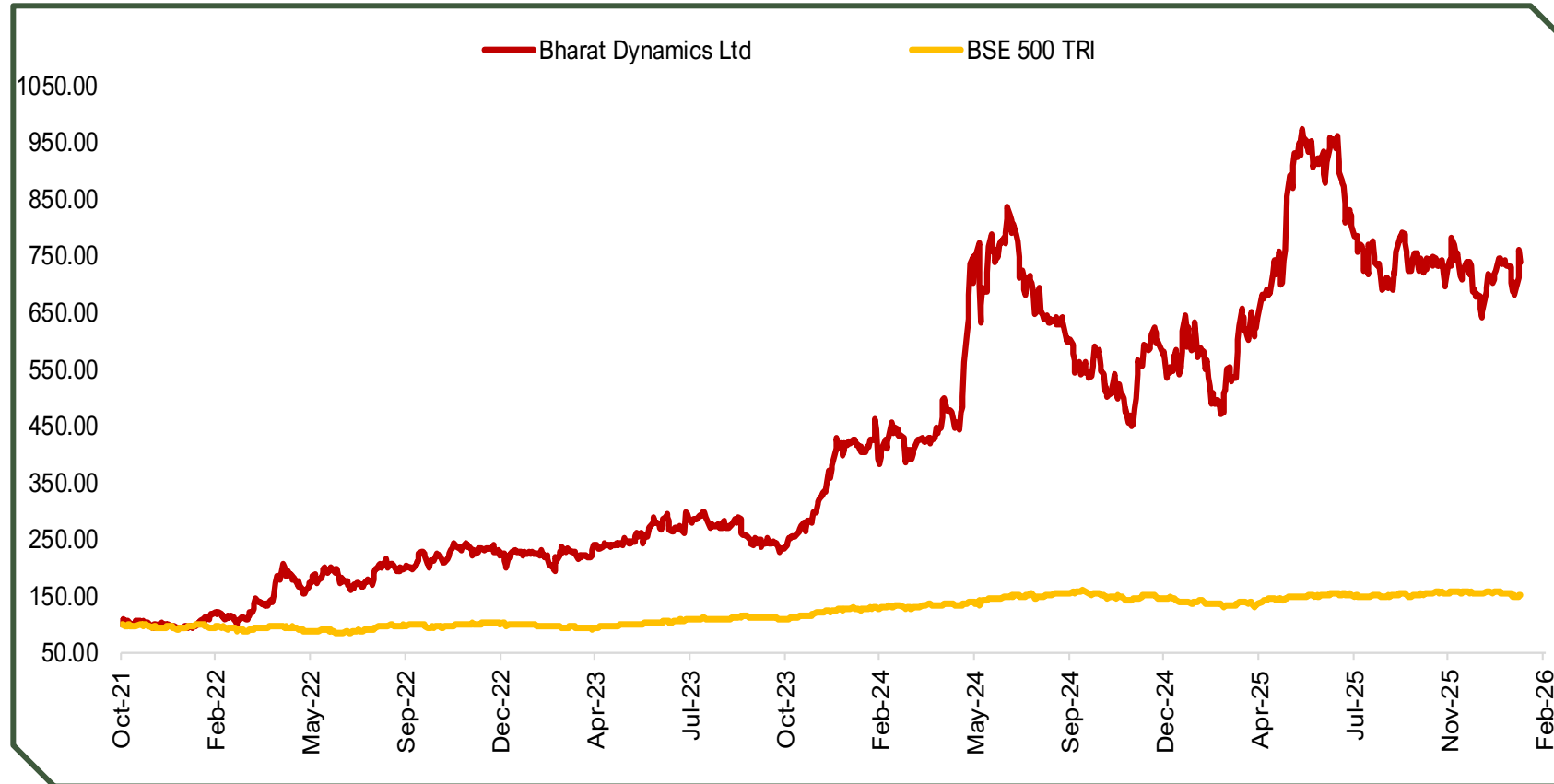
Investment Price
₹207



Current Price
₹1,265



Total Returns
6.12x (4.4 Years)



Note: Stock and Index rebased to the date of first purchase / As on February 28, 2026/ Source: Bloomberg



Sector- Financial Services

- ◆ Cholamandalam Investment and Finance Company Limited (Chola), the financial services arm of the Murugappa Group commenced business as an equipment financing company and today is a comprehensive financial services provider offering vehicle finance, home loans, SME loans, and more.

Key Facts

- ◆ The company offers finance for a wide range of vehicles -- HCVs, LCVs, cars, MUVs and cargo three-wheelers. They also cater to the needs of Corporate and retail consumers through its Retail and Corporate Finance wings. as well as provide Personal loans & home equity loans.
- ◆ Chola operates from 1613 branches across India with assets under management above INR 1.99 Lakh Crore. Chola has a growing clientele of over 43.7 lakh+ happy customers across the nation.
- ◆ With over 47 years of experience in the industry, Chola is driven by a workforce of over 64,900 people spread across 32 Indian states and Union Territories.
- ◆ The company has 3 major subsidiaries Cholamandalam Leasing Ltd (formerly known as Cholamandalam Home Finance Limited), Payswiff Technologies Private Ltd and Cholamandalam Securities Limited



Cholamandalam Investment and Finance Company



Date of Investment
06 January 2023



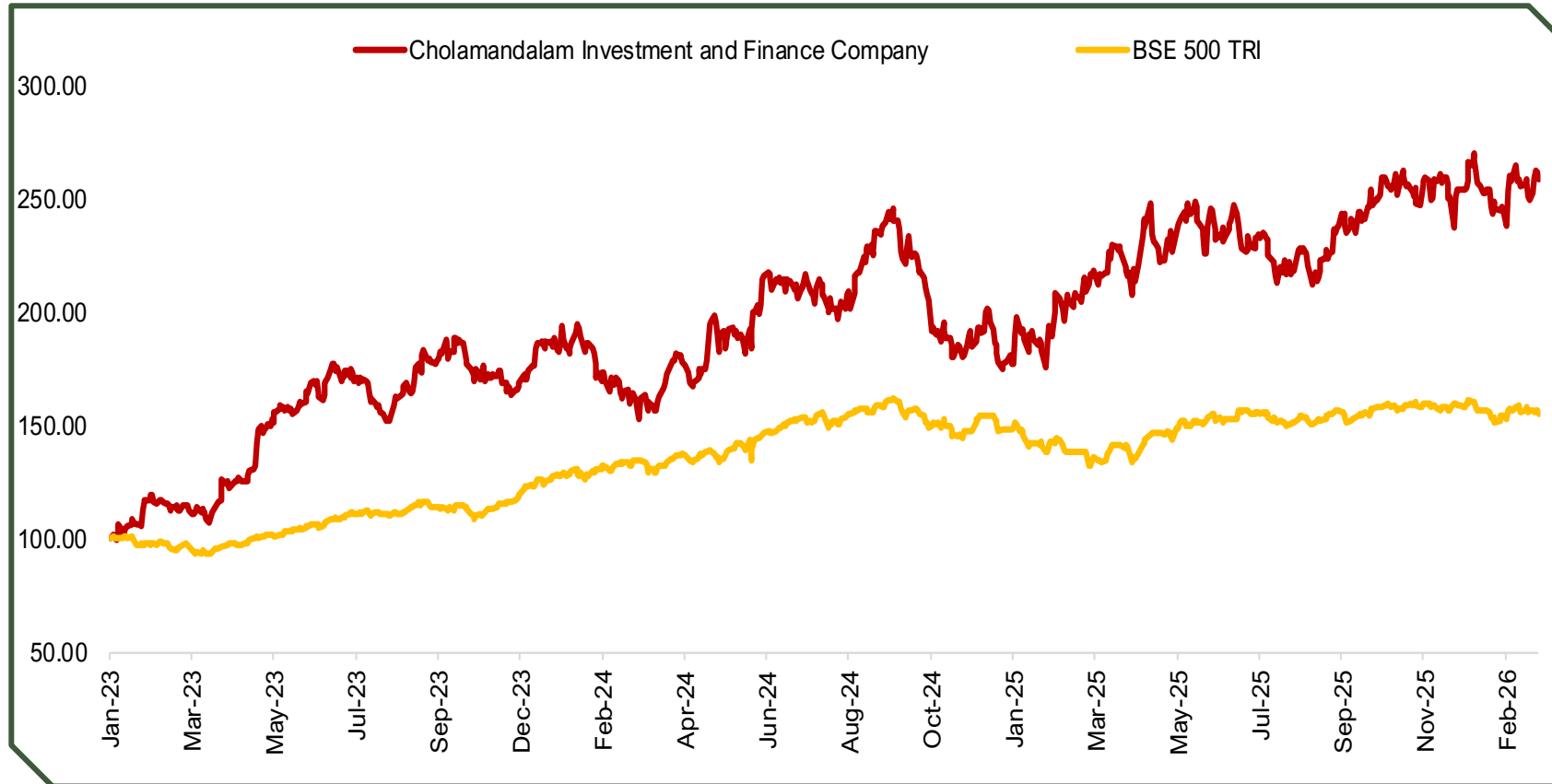
Investment Price
₹668



Current Price
₹1,731



Total Returns
2.59x (3.1 Years)



Note: Stock and Index rebased to the date of first purchase / As on February 28, 2026/ Source: Bloomberg



Sector – Consumer Services

- ◆ Trent is one of the leading players in the Indian retail industry with a series of established brands in various retail segments
- ◆ Trent operates in multiple retail formats in both the value and lifestyle segments such as Westside (lifestyle), Zara (lifestyle), Star Bazaar (Hypermarket) and Landmark (books and music).

Key Facts

- ◆ Trent was among the earliest entrants in the organised retail sector in India and has focused on developing a robust business model in each of the retail formats pursued. Trent is pre-dominantly present in high growth / profitable women wear portfolio (~60 efficiently managing supply-chain / inventories which itself creates a strong entry barriers for peers.
- ◆ Zara, where Trent has a 50% stake (in the JV with Inditex), is a jewel in the company's crown.
- ◆ Trent is India's leading retailer with a presence across various consumer categories (550+ stores). Inherent strength of brands (Westside, Zudio, Star, Zara) and accelerated store additions have led Trent to be among the fastest growing companies in our retail coverage universe.
- ◆ During the year, Zudio added 125 new stores to its portfolio and now has a footprint in 119 cities with 352 stores.





Date of Investment
25 June 2018



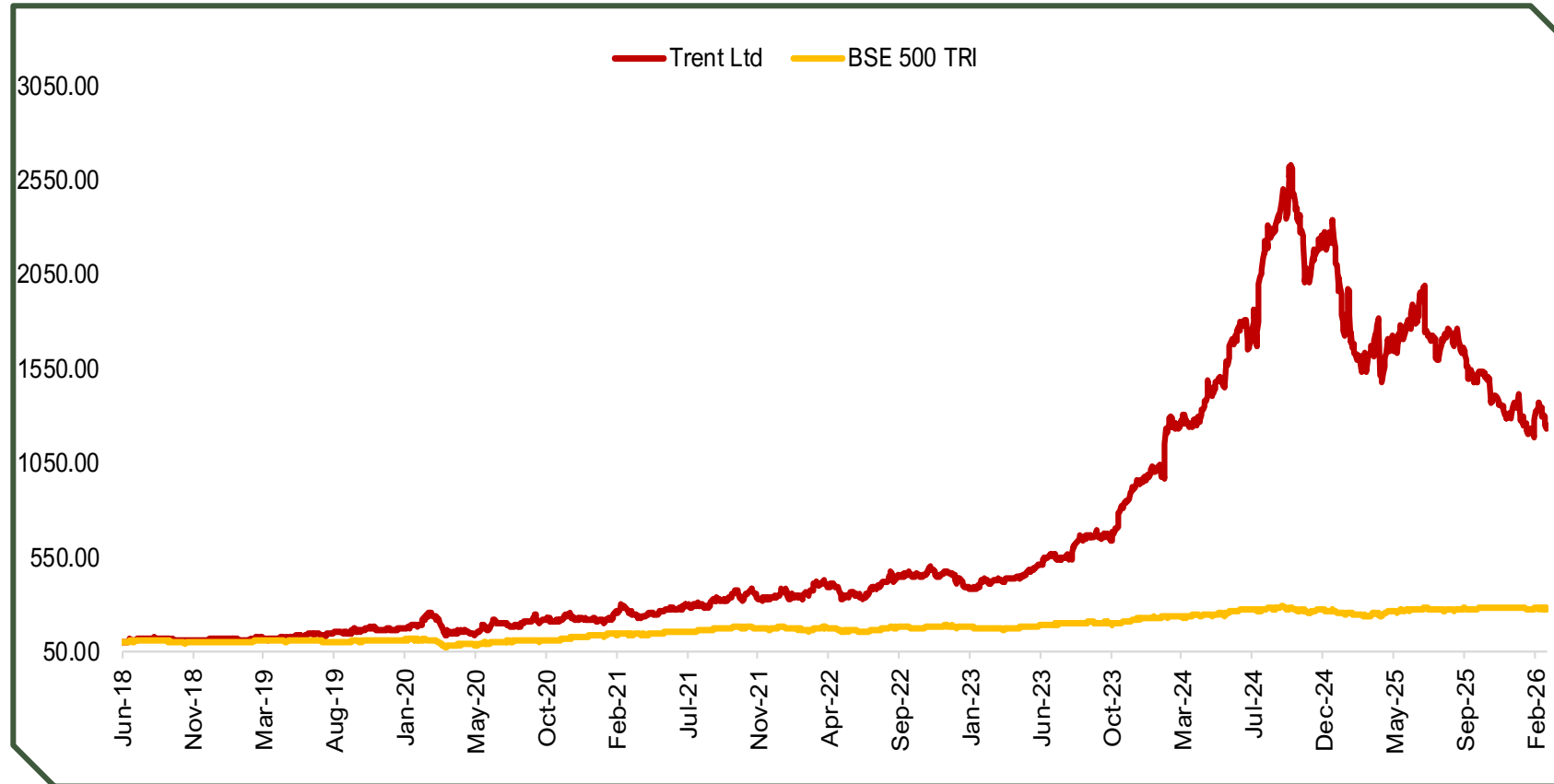
Investment Price
₹313



Current Price
₹3,900



Total Returns
12.45x (7.7 Years)

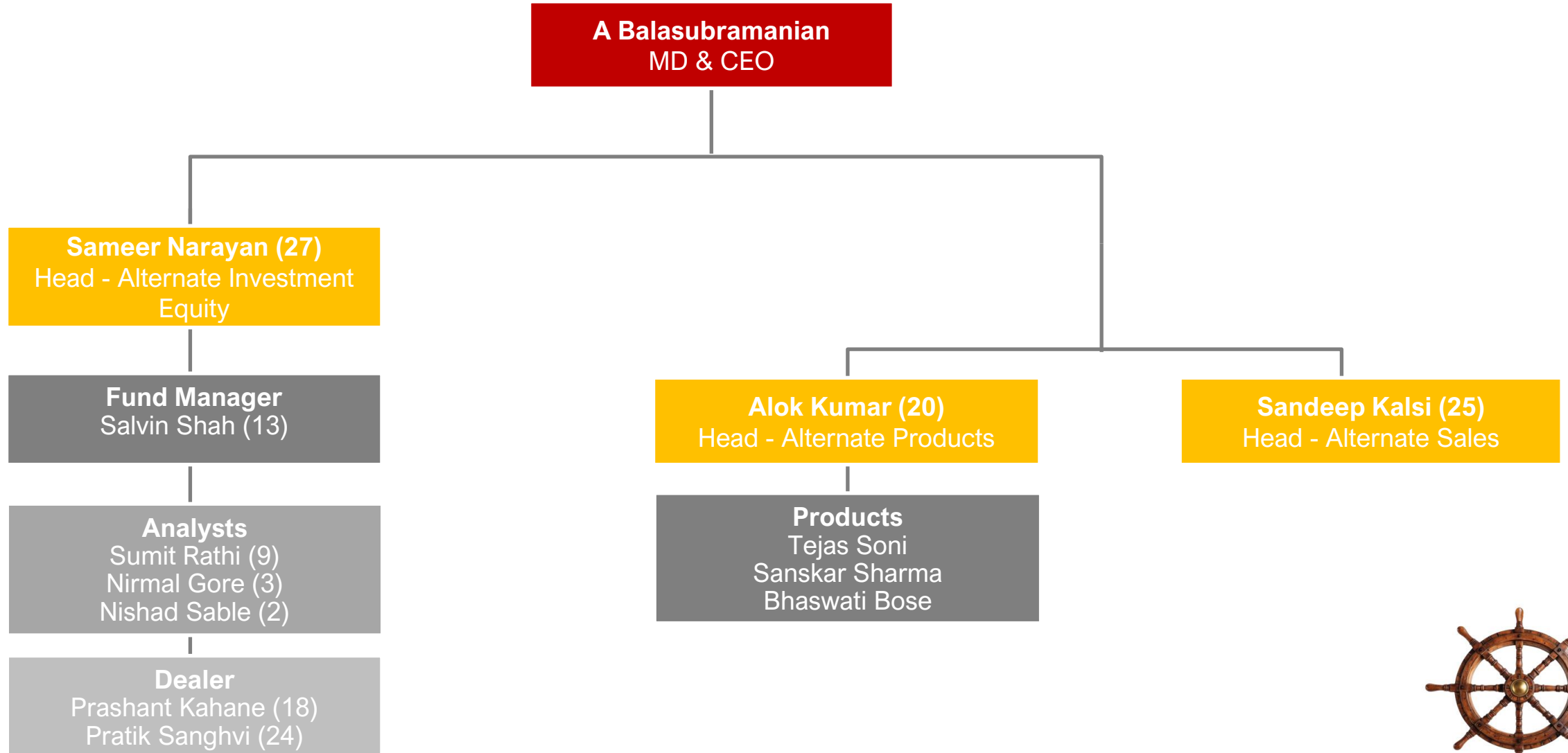


Note: Stock and Index rebased to the date of first purchase / As on February 28, 2026/ Source: Bloomberg



Alternate Business Team Structure

Team Structure





Sameer Narayan

Head-Alternate Investment Equity

- Has 27+ years of experience in Indian Equity markets with significant alpha generation track record over longer time periods.
- Prior to joining ABSLAMC, he was Head – PMS at Invesco Asset Management (India) Pvt Ltd. Managed segregated mandates across both growth (Caterpillar) & value (RISE & DAWN) strategies.
- Has also set up the Adani Family Office in Sep 2011. Began his buy-side career with BNP Paribas Asset Mgmt in 2006 where he advised offshore mandates.
- Has varied sell-side experience through his stints at SSKI, Enam Securities & Motilal Oswal.
- Qualification: Master in Management Studies (MMS) from Narsee Monjee Institute of Management Studies, Mumbai and B.E. degree with specialization in Production Engineering.10



Salvin Shah

Portfolio Manager (Equities)

- Has 13+ years in Portfolio Management and Equity Research.
- His endeavor is to maximize returns for the investors while keeping an eye on portfolio risk. He has been successful at identifying themes and stocks at a very early stage which has resulted in multi-bagger returns for the investors.
- Prior to joining ABSLAMC, he worked with Sanctum Wealth Management as Co-fund Manager in their PMS business. Before Sanctum, Salvin was a part of equity research team at Edelweiss Securities and Athena Investment Management.
- Qualification: Member of Institute of Chartered Accountants of India (ICAI) and a commerce graduate from Mumbai University.





A Balasubramanian MD & CEO

- Has over 30 years' experience in the Mutual Fund Industry and has been with ABSLAMC since inception.
- Previously worked with GIC Mutual Fund. Currently, he is on the Board of Governors of SEBI established National Institute of Securities Markets (NISM).
- Qualification: Diploma in Financial Management, AMP from IIM, Bangalore, MBA from GlobalNxt University, Malaysia, Advanced Management Programme from Harvard University.



Alok Kumar Head – Alternate Products

- A dynamic investment professional with 20+ years of rich experience in capital market, building investment product roadmaps & wealth proposition, Investment Advisory and championing New Initiatives in the Financial Sector
- Prior to joining ABSLAMC, he was heading Alternate & Structured Products and Investment Processes at DBS Bank India Limited
- Has also set up the India's first dedicated Retirement Solutions entity under Principal Financial Group
- Developed India Venture Board as a marketplace to facilitate Venture Capital/Private Equity deals in India and SME Exchange as part of National Stock Exchange
- Qualification: MBA from Narsee Monjee Institute of Management Studies, Mumbai and B.E. degree with specialization in Electrical Engineering



Sandeep Kalsi Head – Alternate Sales

- INSEAD Singapore alumnus with 25+ years of diverse experience in the financial services industry, spanning asset management, alternatives, and banking
- Has led large, multi-functional teams with a focus on delivering strategic outcomes and driving organizational growth
- Successfully built and scaled new business ventures from concept to execution across multiple domains
- He brings extensive experience across leading financial institutions, having held roles at ICICI Bank, Fidelity Mutual Fund, SBI Mutual Fund, Edelweiss Alternatives, and Kotak Alternatives.



Risk Factors associated with investments in Equity & Equity related securities:

- Risk arising from the investment objective, investment strategy, asset allocation and quant model risk:
- Market risk, political and geopolitical risk and risk arising from changing business dynamics, which may affect portfolio returns. At times, portfolios of individual clients may be concentrated in certain companies/industries. The performance of the portfolios would depend on the performance of such companies / industries / sectors of the economy.
- The portfolio proposes to invest in equity and equity related securities. Equity and Equity related securities by nature are volatile and prone to price fluctuations on a daily basis due to both macro and micro factors.
- The value of the portfolio will fluctuate as the daily prices of the individual securities in which they invest fluctuate and may be worth more or less than its original cost, at a given point in time.
- In respect of investments in equity and equity-related instruments, there may be risks associated with trading volumes, settlement periods and transfer procedures that may restrict liquidity of investments in equity and equity related securities.
- The value of the portfolio may be affected generally by factors affecting securities markets, such as price and volume volatility in the capital markets, interest rates, currency exchange rates, changes in policies of the Government, taxation laws or policies of any appropriate authority and other political and economic developments and closure of stock exchanges which may have an adverse bearing on individual securities, a specific sector or all sectors including equity and debt markets.
- Within the regulatory limits applicable at any point in time, the Portfolio Manager may choose to invest in unlisted securities that offer attractive yields. Securities, which are not quoted on the stock exchanges, are inherently illiquid in nature and carry a larger amount of liquidity risk, in comparison to securities that are listed on the exchanges or offer other exit options to the investor, including a put option. This may however increase the risk of the portfolio. The liquidity and valuation of the portfolio's investments due to their holdings of unlisted securities may be affected if they have to be sold prior to their target date of disinvestments
- Investment made in unlisted equity or equity-related securities may only be realizable upon listing of these securities. Settlement problems could cause the portfolio to miss certain investment opportunities.
- Investors may note that Portfolio Manager's investment decisions may not always be profitable, as actual market movements may be at variance with anticipated trends.
- Though the constituent stocks of most indices are typically liquid, liquidity differs across stocks. Due to the heterogeneity in liquidity in the capital market segment, trades on this segment may not get implemented instantly.
- The portfolio may have higher concentration towards a particular stock or sector, at a given point in time. Any change in government policy or any other adverse development with respect to such a stock or the sector, may adversely affect the value of the portfolio.
- The Portfolio Manager does not intend to invest in foreign securities.
- The Portfolio Manager does not intend to engage in short selling or stock lending.
- The portfolio also proposes to invest in derivative instruments. However, the portfolio manager does not intend to write options. The Portfolio manager intends to use exchange traded derivatives as a hedging tool & does not intend to take any naked positions. Nevertheless, trading in derivatives market has risks and issues concerning the use of derivatives that investor should understand. Derivative products are specialized instruments that require investment techniques and risk analysis different from those associated with stocks and bonds.



Risk Factors & Disclaimer

- Derivative products are leveraged instruments and can provide disproportionate gains as well as disproportionate losses to the investor. Even a small price movement in the underlying security could have a large impact on their value. Execution of such strategies depends upon the ability of the Portfolio Manager to identify such opportunities. Identification and execution of such strategies to be persuaded by the Portfolio Manager involve uncertainty and decision of the Portfolio Manager may not always be profitable. No assurance can be given that the Portfolio Manager shall be able to identify or execute such strategies.
- The risks associated with the use of derivatives are different from or possibly greater than, the risk associated with investing directly in securities and other traditional investments. As and when the product trades in the derivatives market there are risk factors and issues concerning the use of derivatives that investors should understand. Derivative products are specialized instruments that require investment techniques and risk analysis different from those associated with stocks and bonds. The use of a derivative requires an understanding not only of the underlying instrument but also of the derivative itself.
- Derivatives require the maintenance of adequate controls to monitor the transactions entered into, the ability to assess the risk that a derivative adds to the portfolio and the ability to forecast price or interest rate movements correctly. There is a possibility that loss may be sustained by the portfolio as a result of the failure of another party (usually referred as the “counter party”) to comply with the terms of the derivatives contract. Other risks in using derivatives include the risk of mispricing or improper valuation of derivatives and the inability of derivatives to correlate perfectly with underlying assets, rates and indices. Thus, derivatives are highly leveraged instruments. Even a small price movement in the underlying security could have a large impact on their value.
- The use of a derivative requires an understanding not only of the underlying instrument but also of the derivative itself. Derivatives require the maintenance of adequate controls to monitor transactions entered into, the ability to assess the risk that a derivative adds to the portfolio and the ability to forecast price or interest rate movements correctly. There is a possibility that loss may be sustained by the portfolio as a result of the failure of another party (usually referred as the “counter party”) to comply with the terms of the derivatives contract. Derivative trades involve execution risks, whereby the rates seen on the screen may not be the rate at which ultimate execution takes place. The options buyer’s risk is limited to the premium paid, while the risk of an options writer is unlimited. However, the gains of an options writer are limited to the premiums earned. The writer of a put option bears the risk of loss if the value of the underlying asset declines below the exercise price. The writer of a call option bears a risk of loss if the value of the underlying asset increases above the exercise price. Investments in index futures face the same risk as the investments in a portfolio of shares representing an index. The extent of loss is the same as in the underlying stocks. Risk of loss in trading futures contracts can be substantial, because of the low margin deposits required, the extremely high degree of leverage involved in futures pricing and potential high volatility of the futures markets.
- The derivatives market in India is nascent and does not have the volumes that may be seen in other developed markets, which may result in volatility in the values. The Portfolio Manager may, from time to time, invest any un-deployed funds in Liquid Portfolio of PMS or in money market instruments. Though the portfolio of liquid funds comprises of short-term deposits, government securities and money market instruments, they cannot be considered as totally risk free. This is because liquidity patterns and short term interest rates of the government change, sometimes on a daily basis, thereby making the fund susceptible. Liquid Portfolio returns are not guaranteed and it entirely depends on market movements.

Disclaimer: The views expressed above are the views of the Portfolio Managers of the portfolio. They should not be construed as investment advice.

Investments in securities are subject to market risks and there can be no assurance or guarantee that the objectives of the Product will be achieved. **Past performance may or may not be sustained in future.**

Regulatory Disclosure: All investors have the option to invest directly with ABSLAMC-Portfolio Manager

For sales enquiry/investor onboarding queries, mail us at abslamc.alternate@adityabirlacapital.com

For Investor queries/complaints, please get in touch with your nearest PMS Relationship Contact Cell,

visit <https://portfoliomanagementservices.adityabirlacapital.com/#> or

mail us at care.pms@adityabirlacapital.com

Reach us at our dedicated PMS toll free No: **1800 270 7000**

Aditya Birla Sun Life Portfolio Management Services is a division of Aditya Birla Sun Life AMC Limited

CIN no. L65991MH1994PLC080811; Website: <https://portfoliomanagementservices.adityabirlacapital.com/#>

One World Center, Tower 1, 17th Floor, Jupiter Mills, Senapati Bapat Marg, Elphinstone Road, Mumbai - 400 013.

Tel: 4356 8000. Fax: 4356 8110 / 8111

